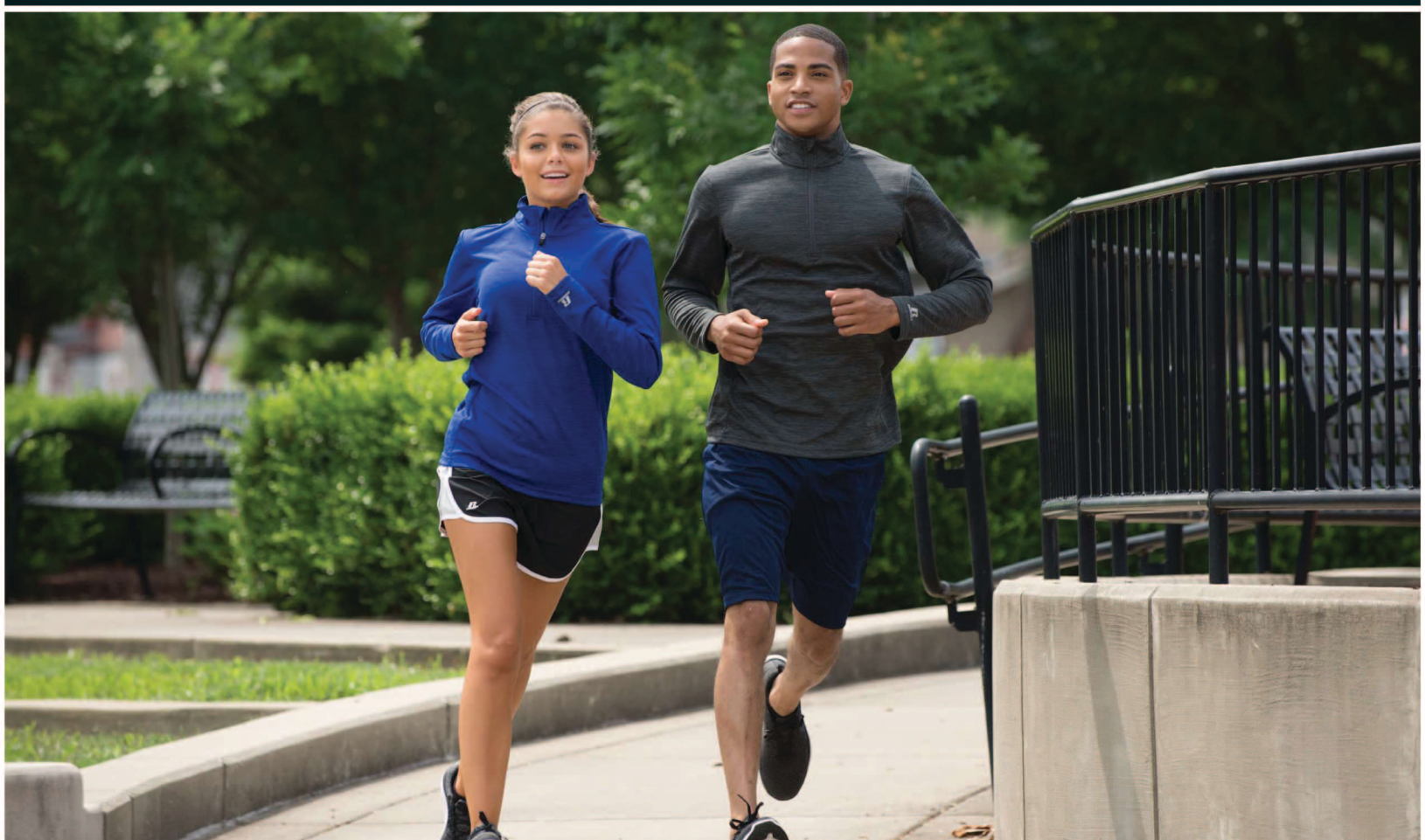




# TEAM MATES, INC 2018





# THE ESSENTIAL TEE COLLECTION



## ESSENTIAL TEE

64STTM0 – Adult	\$6.50
64STTB0 – Youth*	\$5.50
64STTX0 – Womens	\$6.50

60% Cotton / 40% Polyester Jersey • 4.5 oz / 153 gsm

Adult Sizes: S-XXL    Oversize: 3XL-4XL    Youth Sizes: S-XL    Womens: S-XXL

- Dri-Power® Moisture Wicking Fabric, keeps you dry & cool.
- Anti-Odor Technology, provides Built in Freshness Protection.
- Soft SpunYarn, delivers a soft comfortable feel.
- Imported.





**MEN'S ESSENTIAL POCKETED SHORT**

TS7X2M0 – (Men's) \$16.00  
 TS7X2B0 – (Youth) \$15.00  
 100% Polyester Interlock

Men's Sizes: S – XXL    Oversize: 3XL  
 Youth Sizes: S – XL

- Dri-Power® Moisture Wicking Fabric, keeps you dry & cool.
- Side Entry Pockets, for phone & media storage.
- Internal Drawcord, for an adjustable comfort fit.
- 10" Inseam- Men's.
- 7" Inseam-Youth.
- "R RUSSELL" at lower right leg.
- Imported.



**MEN'S COTTON POCKET SHORT**

25843M0 \$10.50

Colors: 100% Cotton  
 Black Heather: 50% Cotton/50% Polyester  
 Oxford: 53% Polyester/47% Cotton

Sizes: S-XXL    Oversize: 3XL-4XL

- Internal Drawcord, for an adjustable comfort fit.
- Side entry pockets, for phone & media storage.
- 8" Inseam.
- "R RUSSELL" at lower right leg.
- Imported.

**Decoration Type:**

Screen Print, Embroidery

**Decoration Placements:**

18







**MEN'S 9" POLYESTER TRICOT MESH POCKET SHORT**

**651AFM0**

**\$14.50**

100% Polyester

Sizes: S-3XL

- Dri-Power® Moisture Wicking Fabric, keeps you dry & cool.
- Elastic Waistband With Inside Quickcord, for an adjustable comfort fit.
- Side entry pockets, provides phone & media storage.
- 9" inseam on all sizes.
- "R RUSSELL" on lower right leg.
- Imported.



**MEN'S/YOUTH POLYESTER TRICOT MESH SHORT**

**659AFMK – Adult**

**\$13.50**

**659AFB0 – Youth**

**\$13.00**

100% Polyester Tricot Mesh

Adult Sizes: S-XXL

Oversize: 3XL-4XL

Youth Sizes: S-XL

- Dri-Power® Moisture Wicking Fabric, keeps you dry & cool.
- Elastic Waistband With Inside Quickcord, for an adjustable comfort fit.
- 9" inseam adult / 7" inseam youth.
- No Pockets.
- "R RUSSELL" on upper right hip.
- Imported.



**Notes:**

White offered in S-XXL only





### MEN'S ESSENTIAL POLO

**7EPTUMO**  
100% Polyester

**\$28.00**

Sizes: S-XXL    Oversize: 3XL-4XL

- Dri-Power® moisture wicking fabric, keeps you dry & cool.
- Anti-Odor Technology, provides Built in Freshness Protection.
- UPF 30+, provides protection from the sun.
- No curl collar.
- Clean finished placket with 3 logoed buttons for modern styling.
- Imported.

Women's version: 7EPTUX0



### WOMEN'S ESSENTIAL POLO

**7EPTUX0**  
100% Polyester

**\$28.00**

Sizes: S-XXL

- Dri-Power® moisture wicking fabric, keeps you dry & cool.
- Anti-Odor Technology, provides Built in Freshness Protection.
- UPF 30+, provides protection from the sun.
- No curl collar.
- Clean finished placket with 3 logoed buttons for modern styling.
- Imported.

Men's version: 7EPTUM0





## MEN'S 1/4 ZIP PULLOVER

QZ7EAM0

\$30.00

QZ7EAX0

\$30.00

100% Polyester 2-Tone Interlock

Sizes: XS-3XL Ladies' Sizes: XS-3XL

- Light Weight Stretch Fabric provides comfort and full mobility.
- Dri-Power® Moisture Wicking Fabric, keeps you dry & cool.
- Anti-Odor Technology, keeps you fresh throughout your day.
- "R RUSSELL" on left sleeve end.
- Imported.



BLK  
Black

CRD  
Cardinal

DGR  
Dark  
Green

MAR  
Maroon

NAV  
Navy

PUR  
Purple

ROY  
Royal

SHL  
Stealth

TRR  
True Red





**MEN'S COTTON RICH FLEECE PULLOVER HOOD**

**82HNSM0** **\$37.50**

Heathers: 66% Cotton/34% Polyester  
 Medium Grey Heather: 75% Cotton/25% Polyester  
 Ash: 82% Cotton/18% Polyester  
 8.5 OZ / 288 GSM

Sizes: XS-XXL      Oversize: 3XL-4XL

- Ring Spun Yarn, delivers a soft comfortable feel.
- 3 End Fleece, helps provide additional warmth.
- Anti Pill, ensures an always smooth and comfortable feel.
- Zippered Front Muff Pocket, for phone & media storage.
- Two-ply hood with grommets, for additional protection from the elements.
- Tonal "R" logo tab at Left Sleeve.
- Imported.



**MEN'S COTTON RICH FLEECE CREW**

**82CNSM0** **\$30.00**

Heathers: 66% Cotton/34% Polyester  
 Medium Grey Heather: 75% Cotton/25% Polyester  
 Ash: 82% Cotton/18% Polyester  
 8.5 OZ / 288 GSM

Sizes: XS-XXL      Oversize: 3XL-4XL

- Ring Spun Yarn, delivers a soft comfortable feel.
- 3 End Fleece, helps provide additional warmth.
- Anti Pill, ensures an always smooth and comfortable feel.
- Zippered Front Muff Pocket, for phone & media storage.
- Tonal "R" logo tab at Left Sleeve.
- Imported.





**MEN'S COTTON RICH FLEECE PULLOVER HOOD**

**82HNSM0** **\$37.50**

Heathers: 66% Cotton/34% Polyester  
 Medium Grey Heather: 75% Cotton/25% Polyester  
 Ash: 82% Cotton/18% Polyester  
 8.5 OZ / 288 GSM

Sizes: XS-XXL      Oversize: 3XL-4XL

- Ring Spun Yarn, delivers a soft comfortable feel.
- 3 End Fleece, helps provide additional warmth.
- Anti Pill, ensures an always smooth and comfortable feel.
- Zippered Front Muff Pocket, for phone & media storage.
- Two-ply hood with grommets, for additional protection from the elements.
- Tonal "R" logo tab at Left Sleeve.
- Imported.



**MEN'S COTTON RICH FLEECE CREW**

**82CNSM0** **\$30.00**

Heathers: 66% Cotton/34% Polyester  
 Medium Grey Heather: 75% Cotton/25% Polyester  
 Ash: 82% Cotton/18% Polyester  
 8.5 OZ / 288 GSM

Sizes: XS-XXL      Oversize: 3XL-4XL

- Ring Spun Yarn, delivers a soft comfortable feel.
- 3 End Fleece, helps provide additional warmth.
- Anti Pill, ensures an always smooth and comfortable feel.
- Zippered Front Muff Pocket, for phone & media storage.
- Tonal "R" logo tab at Left Sleeve.
- Imported.







**MEN'S COTTON RICH FLEECE POCKET PANT**

**82PNSM0**

**\$30.00**

Heathers: 66% Cotton/34% Polyester  
 Medium Grey Heather: 75% Cotton/25% Polyester  
 Ash: 82% Cotton/18% Polyester  
 8.5 OZ / 288 GSM

Sizes: S-XXL      Oversize: 3XL-4XL

- Ring Spun Yarn, delivers a soft comfortable feel.
- 3 End Fleece, helps provide additional warmth.
- Anti Pill, ensures an always smooth and comfortable feel.
- Side Entry Pockets, plus Hidden Media Pocket, for additional media storage.
- Imported.



951  
Ash

H5N  
Navy Heather

A7I  
Charcoal Grey  
Heather

7J  
Medium Grey Heather

**MEN'S COTTON RICH FLEECE JOGGER**

**82JNSM0**

**\$32.50**

Heathers: 66% Cotton/34% Polyester  
 Medium Grey Heather: 75% Cotton/25% Polyester  
 Ash: 82% Cotton/18% Polyester  
 8.5 OZ / 288 GSM

Sizes: XS-XXL      Oversize: 3XL

- Tapered Fit.
- Ring Spun Yarn, delivers a soft comfortable feel.
- 3 End Fleece, helps provide additional warmth.
- Zippered Pockets, for phone & media storage.
- Anti Pill, ensures an always smooth and comfortable feel.
- Imported.



HZB  
Charcoal  
Grey Heather

A7J  
Medium  
Grey Heather



**DRI-POWER® FLEECE ¼ ZIP CADET**

**1Z4HBM0**

**\$25.50**

50% Cotton/50% Polyester  
 Oxford: 52% Polyester/48% Cotton  
 9.3 OZ / 315 GSM

Sizes: S-XXL      Oversize: 3XL

- Dri-Power® Moisture Wicking Fabric, keeps you dry & warm.
- Reverse coil center front zipper with jersey zipper garage.
- Side entry welt pockets, provides storage and warmth.
- 1x1 ribbed cuffs and waistband to help stay in place.
- "R" logo flagtag on left hem.



BLK Black      QZB Navy      OXF Oxford      GW8 Black Heather

**DRI-POWER® FLEECE COLORBLOCK HOOD**

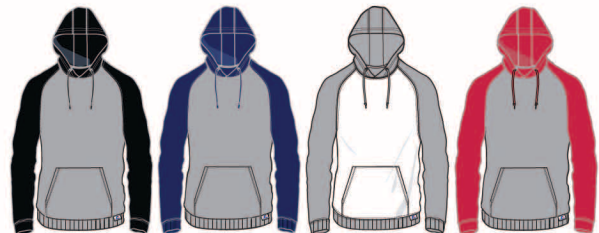
**693HBM0**

**\$27.00**

50% Cotton/50% Polyester  
 Oxford: 52% Polyester/48% Cotton  
 9.3 OZ / 315 GSM

Sizes: S-XXL      Oversize: 3XL

- Dri-Power® Moisture Wicking Fabric, keeps you dry & warm.
- Three piece double ply hood, provides protection from the elements.
- Front muff pocket, provides storage and warmth .
- "R" logo flagtag on left hem.



OBK Oxford/Black      OFN Oxford/Navy      WHF White/Oxford      OTD Oxford/True Red





**DRI-POWER® FLEECE CREW**

**698HBM1**

**\$18.50**

50% Cotton/50% Polyester  
 Oxford: 52% Polyester/48% Cotton  
 9.3 OZ / 315 GSM

Sizes: S-XXL    Oversize: 3XL-4XL

- Dri-Power® Moisture Wicking Fabric, keeps you dry & warm.
- Rib knit cuffs and waistband, for added comfort.
- "R" logo tab at waistband.
- Imported.



951 Ash	BLK Black	BOR Burnt Orange	CRD Cardinal	DGR Dark Green	GLD Gold	GW8 Black Heather	LEG Collegiate Blue
------------	--------------	------------------------	-----------------	----------------------	-------------	-------------------------	---------------------------



MAR Maroon	QZB Navy	OXF Oxford	PUR Purple	ROY Royal	TRR True Red	WHI White
---------------	-------------	---------------	---------------	--------------	-----------------	--------------

**DRI-POWER® FLEECE PULLOVER HOOD**

**695HBM1**

**\$25.50**

Colors: 50% Cotton/50% Polyester  
 Oxford: 52% Polyester/48% Cotton  
 9.3 OZ / 315 GSM

Sizes: S-XXL    Oversize: 3XL-4XL

- Dri-Power® Moisture Wicking Fabric, keeps you dry & warm.
- Two-Ply Hood With Grommets and drawcord for additional protection from the elements.
- Rib knit cuffs and waistband, for added comfort.
- Front Muff Pocket, for phone & media storage.
- "R" logo tab at waistband.
- Imported.



951 Ash	BLK Black	BOR Burnt Orange	CRD Cardinal	DGR Dark Green	GLD Gold	GW8 Black Heather
------------	--------------	------------------------	-----------------	----------------------	-------------	-------------------------



LEG Collegiate Blue	MAR Maroon	QZB Navy	OXF Oxford	PUR Purple	ROY Royal	WHI White
---------------------------	---------------	-------------	---------------	---------------	--------------	--------------



BLK Black    CRD Cardinal    QZB Navy    OXF Oxford

**DRI-POWER® FLEECE FULL ZIP HOOD**

**697HBM1** **\$29.50**

Colors: 50% Cotton/50% Polyester  
 Oxford: 52% Polyester/48% Cotton  
 9.3 OZ / 315 GSM

Sizes: S-XXL    Oversize: 3XL

- Dri-Power® Moisture Wicking Fabric, keeps you dry & warm.
- Two-Ply Hood With Grommets and matching draw cord, delivers additional protection from the elements.
- Full front center zipper.
- Rib knit cuffs and waistband, for added comfort.
- Front Muff Pocket, provides storage and warmth.
- "R" logo tab at waistband.
- Imported.

**DRI-POWER® CLOSED-BOTTOM FLEECE POCKET PANT**

**029HBM0** **\$23.00**

Colors: 50% Cotton/50% Polyester  
 Oxford: 52% Polyester/48% Cotton  
 9.3 OZ / 315 GSM

Sizes: S-XXL    Oversize: 3XL

- Dri-Power® Moisture Wicking Fabric, keeps you dry & warm.
- Side Entry Pockets, provides storage and warmth.
- Elastic Waistband With Inside Quickcord, for an adjustable comfort fit.
- Elastic Hem Leg Bottoms.
- "R RUSSELL" on right hip.
- Graded inseams: S-29.5", M-30.5", L-31.5", XL-32.5", 2XL-33", 3XL-33.5", 4XL-34".
- Imported.

INSEAM:

S 29½"	XXL 33"
M 30½"	3XL 33½"
L 31½"	4XL 34"
XL 32½"	



BLK Black    GW8 Black Heather    QZB Navy    \*OXF Oxford

\*S-4XL





INSEAM:  
 S 30" XL 33"  
 M 31" XXL 34"  
 L 32" 3XL 35"  
 4XL 36"

**DRI-POWER® OPEN-BOTTOM FLEECE POCKET PANT**

**596HBM0 \$23.00**

Colors: 50% Cotton/50% Polyester  
 Oxford: 52% Polyester/48% Cotton  
 9.3 OZ / 315 GSM

Sizes: S-XXL Oversize: 3XL-4XL

- Dri-Power® Moisture Wicking Fabric, keeps you dry & warm.
- Side Entry Pockets, provide storage and warmth.
- Elastic Waistband With Inside Quickcord, for an adjustable comfort fit.
- "R RUSSELL" on right hip.
- Graded inseams: S-30", M-31", L-32", XL-33", 2XL-34", 3XL-35", 4XL-36".
- Imported.



BLK Black  
 GW8 Black Heather  
 CRD Cardinal  
 DGR Dark Green  
 MAR Maroon  
 QZB Navy  
 OXF Oxford  
 PUR Purple  
 ROY Royal  
 TRR True Red

**DRI-POWER® CLOSED-BOTTOM FLEECE PANT**

**696HBM0 \$18.50**

Colors: 50% Cotton/50% Polyester  
 Oxford: 52% Polyester/48% Cotton  
 9.3 OZ / 315 GSM

Sizes: S-XXL Oversize: 3XL

- Dri-Power® Moisture Wicking Fabric, keeps you dry & warm.
- Elastic hem leg bottoms.
- Graded inseams: S-29.5", M-30.5", L-31.5", XL-32.5", 2XL-33", 3XL-33.5", 4XL-34".
- Imported.

ADULT INSEAM:  
 S 29½"  
 M 30½"  
 L 31½"  
 XL 32½"  
 XXL 33"  
 3XL 33½"  
 4XL 34"



951 Ash  
 BLK Black  
 GW8 Black Heather  
 QZB Navy  
 \*OXF Oxford

\*S-4XL



**WOMEN'S LIGHTWEIGHT FLEECE CREW**

**LF3YHX0** **\$32.00**  
 60% Cotton/40% Polyester  
 7.6 OZ / 258 GSM

Sizes: S-XXL

- 1x1 ribbed collar, v-patch, cuffs and waistband, for added comfort.
- Raglan sleeves with 2 needle cover seam.
- "R RUSSELL" embroidery logo on lower left sleeve.
- Imported.



**WOMEN'S LIGHTWEIGHT FLEECE PULLOVER HOOD**

**LF1YHX0** **\$34.00**  
 60% Cotton/40% Polyester  
 7.6 OZ / 258 GSM

Sizes: S-XXL

- Two piece single ply hood provides protection from the elements.
- Front Muff Pocket, for phone & media storage.
- "R RUSSELL" embroidery on wearer's left sleeve cuff.
- Imported.







**WOMEN'S LIGHTWEIGHT FLEECE PANT**

**LF5YHX0**

**\$29.00**

60% Cotton/40% Polyester  
7.6 OZ / 258 GSM

Sizes: S-XXL

- Rib trim waistband with outside drawcord, for added comfort.
- Side entry pockets with rib trim.
- Upper back yoke with single needle topstitch.
- Logo at right hip.
- Imported.



**YOUTH DRI-POWER® FLEECE CREW**

**998HBB1**

**\$14.00**

Colors: 50% Cotton/50% Polyester  
Oxford: 52% Polyester/48% Cotton  
9.3 OZ / 315 GSM

Sizes: S-XL

- Dri-Power® Moisture Wicking Fabric, keeps you dry and warm.
- Rib knit cuffs and waistband, for added comfort.
- "R RUSSELL" logo tab at waistband.
- Imported.



BLK Black    GW8 Black Heather    DGR Dark Green    MAR Maroon



QZB Navy    OXF Oxford    ROY Royal    TRR True Red



**YOUTH DRI-POWER® FLEECE PULLOVER HOOD**

995HBB1

\$19.50

Colors: 50% Cotton/50% Polyester

Oxford: 52% Polyester/48% Cotton

9.3 OZ / 315 GSM

Sizes: S-XL

- Dri-Power® Moisture Wicking Fabric, keeps you dry and warm.
- Two-Ply Hood, for additional protection from the elements.
- Rib knit cuffs and waistband to help stay in place.
- Front Muff Pocket, for phone & media storage.
- "R RUSSELL" logo tab at waistband.
- Imported.



BLK Black  
 GW8 Black Heather  
 MAR Maroon  
 DGR Dark Green  
 QZB Navy  
 OXF Oxford  
 ROY Royal  
 TRR True Red

**YOUTH DRI-POWER® FLEECE POCKETED PANT**

596HBB2

\$14.50

Colors: 50% Cotton/50% Polyester

Oxford: 52% Polyester/48% Polyester

9.3 OZ / 315 GSM

Youth Sizes: S-XL

- Dri-Power® Moisture Wicking Fabric, keeps you dry and warm.
- Elastic Waistband with Inside Quickcord, for an adjustable comfort fit.
- Side Entry Pockets, provides storage and warmth.
- Graded inseams: S-21 ¾, M-24 ¾, L-27 ¾, XL-30 ¾.
- Heat transfer "R RUSSELL" on right hip.
- Imported.



BLK Black  
 GW8 Black Heather  
 QZB Navy  
 OXF Oxford